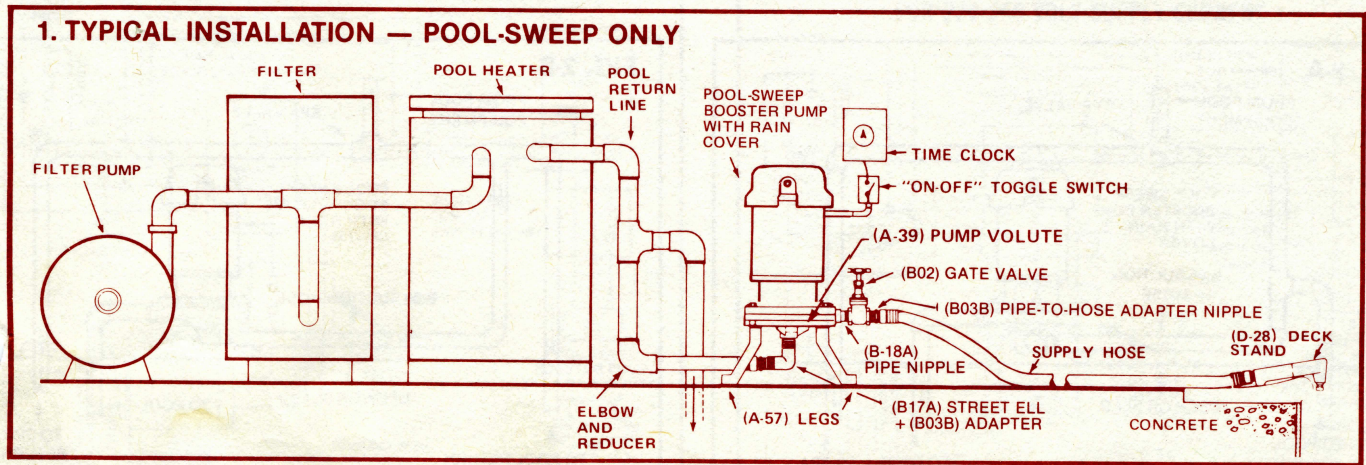
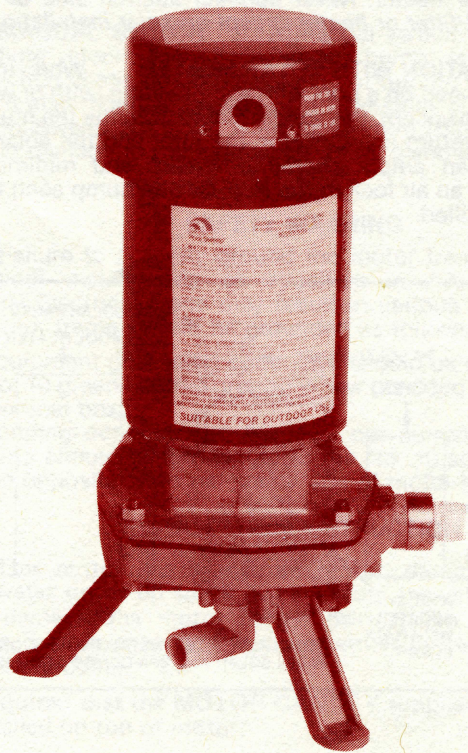


BOOSTER PUMP Installation-Parts List



Dear Pool-Sweep Owner:
Here are your Booster Pump Installation Instructions and Parts List. All of the electrical work should be done by a licensed electrician and must comply with applicable electrical code requirements.



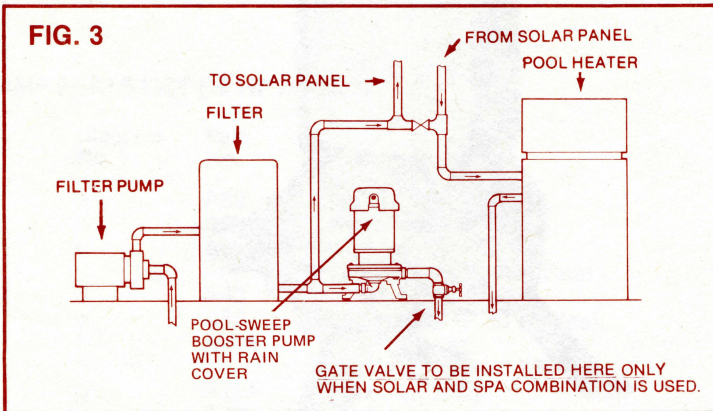
Arneson Pool-Sweep Booster Pump Installation

This is a specially designed booster pump. It is 1/2 horsepower with a 1.9 service factor producing a minimum of 50 psi at 12 GPM. Substitute pumps generally do not perform to these required standards.

1 LOCATION ... Place pump on a firm and level surface. It need not be bolted down unless required by local code. Select most convenient location for a neat and serviceable installation—as close as possible to filtered water return line. *Note:* Pool-Sweep booster pump must always be connected to return line on discharge side of filter. *Never connect suction side of booster pump ahead of filter.* (See Fig. 1)

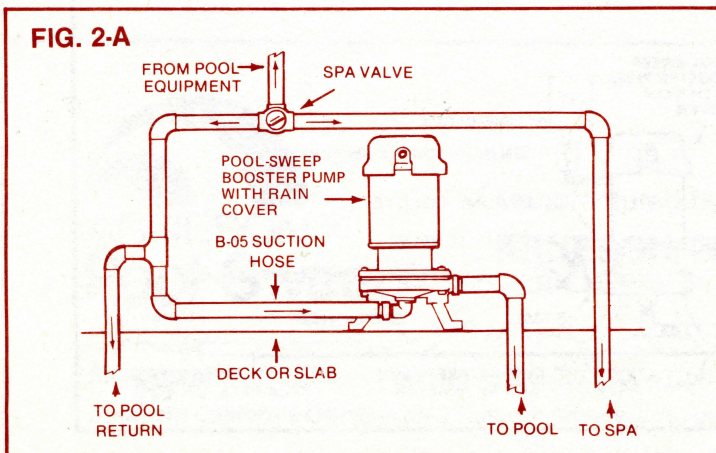
2 TYPICAL INSTALLATION POOL-SWEEP ONLY ... Pool heater considerations ... If a pool heater is used, suction side of Pool-Sweep booster pump must be connected into the return line *after* heater. *Never connect suction side of booster pump ahead of filter or heater except on solar installations.*

3 INSTALLATION WITH SOLAR HEATER ... When installing a Pool-Sweep on a pool with solar heating (with or without a gas heater for back-up), the saddle clamp or inline tee must be installed on the return line between the filter and the solar heater. This assures an ample supply of water, and minimizes the possibilities of an air lock in the Pool-Sweep pump each time the solar panel is filled.



4 INSTALLATIONS WITH SPA POOLS ... If your pool is plumbed for a spa pool, connect suction side of Pool-Sweep booster pump *after* spa by-pass valve as in 2A or alternate 2B.

5 PUMP INLET CONNECTION TO POOL RETURN LINE ... On pre-plumbed installations use an elbow and reducing bushing if needed (See Fig. 1). On existing installations use a tee or saddle clamp. Pump suction must be connected to



the return line after filter and heater as follows:

- Preferable, whenever possible, underneath side (*never* on top) of horizontal return line, or
- As close as possible to floor on vertical return line.

6 EXISTING INSTALLATIONS ABOVE WATER LEVEL ... (Pool filter equipment located above pool water level) A 3/4" threaded outlet is needed in return line to connect booster pump suction to filtration system. If a saddle connection is made **BE SURE RETURN LINE IS DRAINED FREE OF WATER BEFORE AND DURING DRILLING OPERATION** and proceed as follows:

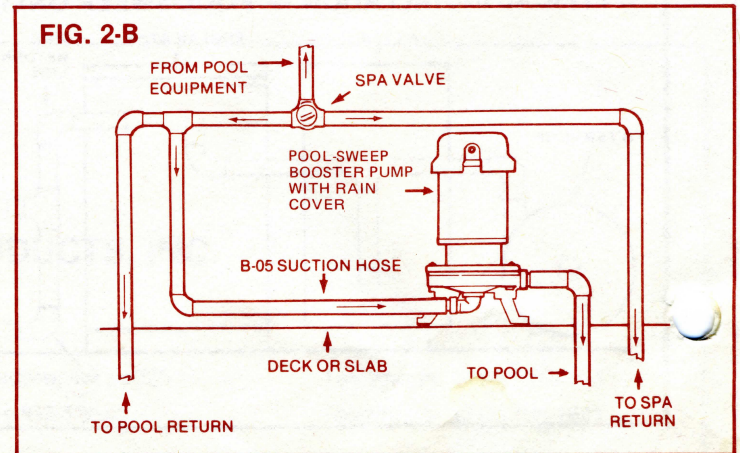
- Fit saddle (K) of proper size over desired location in return line.
- Screw into saddle 3/4" male pipe x 3/4" male hose adapter (B03B) supplied in pump package.
- Drill hole into pipe or tubing through hose adapter and saddle opening. Use a 23/32" or 11/16" drill which will just clear and be guided by adapter fitting.
- Thread the male end of the (B17A) street ell into the pump suction tapping in the center of the volute. (Use pipe sealing compound suitable for use with plastic parts.) Install (B03B) adapter in female end of (B17A) street ell.
- Using rubber washers (D10) in each end, connect one end of 2' long rubber suction hose (B05) to filtered water return line and other end to (B03B) adapter in pump suction. (See Fig. 4)

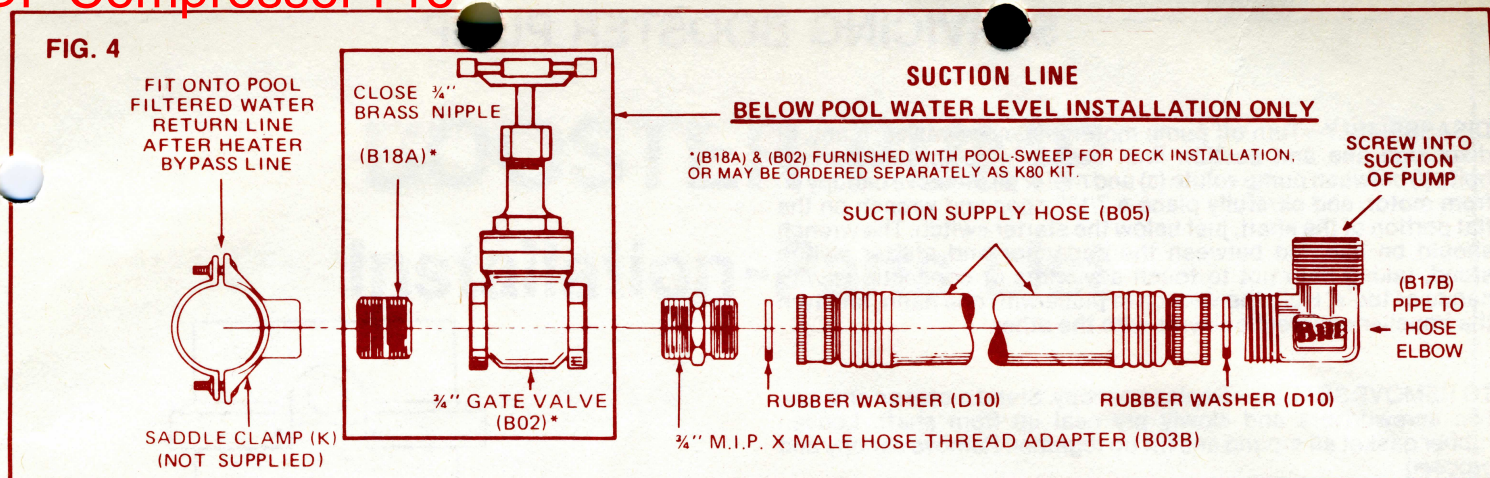
7 EXISTING INSTALLATIONS BELOW WATER LEVEL ... (Pool filter equipment located below pool water level) if a saddle connection is made **BE SURE RETURN LINE IS DRAINED FREE OF WATER BEFORE AND DURING DRILLING OPERATION** and proceed as follows: (See Fig. 4)

- Place saddle clamp of proper size over desired location in return line.
- Install a close 3/4" brass nipple (B18A), a brass gate valve (B02) and a hose adapter (B03B) on saddle clamp before drilling.
- Insert drill through hose adapter and open gate valve and drill hole into return line.
- To connect pump proceed as in 6 d. and e. above. **IMPORTANT!!!** Be sure to open gate valve before operating pump. Once opened, valve handle should be removed in order to minimize the risk of running pump without water, thereby damaging its seal and impeller.

CAUTION

Be sure all electrical power is OFF before making any electrical connections to existing power sources.





8 BOOSTER PUMP ELECTRICAL CONNECTIONS ... IMPORTANT! Pump motor can be seriously damaged if connected to wrong voltage. Each pump shipped from factory is prewired to operate on 230 volts, but motor can also be wired to operate on 115 volts by making a simple modification at motor wire connection plate. A voltage wiring schematic is located on motor. Check voltage at intended source before making electrical connection and turning on power to pump.

- Electrical work should be done by a licensed electrician.
- Electrical supplies are not included with Pool-Sweep because of the great variety of individual electrical code requirements.
- Check local electrical codes for particular requirements in your area.

9 Conductor must be No. 8 AWG or larger when mounted within 5 ft. of the inside walls of swimming pool.

10 TIME CLOCK ... Installation of a separate time clock for Pool-Sweep is highly recommended. Time clocks for filter pump and Pool-Sweep must be coordinated at all times to insure proper sequence of filter and Pool-Sweep operations. If power to time clocks is shut off or interrupted for any reason the time must be reset.

Pool-Sweep must be run for length of time necessary to clean pool but should never be allowed to run while filter system is off as this may result in damage to Pool-Sweep pump. A longer than normal cleaning cycle is recommended for first 30 days. Pool-Sweep will commence operating at least 1/2 hour after the filter pump starts and stop operating at least 1/2 hour before the filter pump stops. Running the Pool-Sweep without the filter system in operation will void the warranty of the Pool-Sweep.

11 MANUAL SWITCH ... A manual switch located between time clock and Pool-Sweep pump is recommended. This switch eliminates the necessity of turning pump off at time clock. It also reduces possibility of time clock automatically turning Pool-Sweep pump on when gate valve (B2) may be closed, causing damage to pump seal. (See Fig. 5 and 6)

SAFETY WARNING

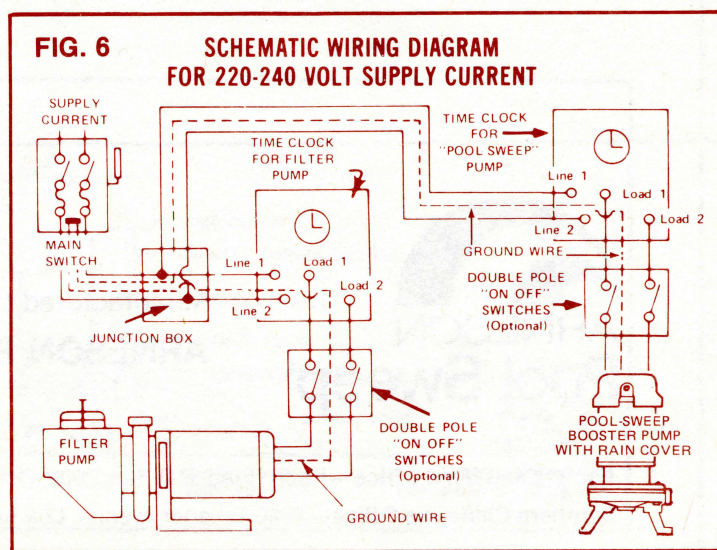
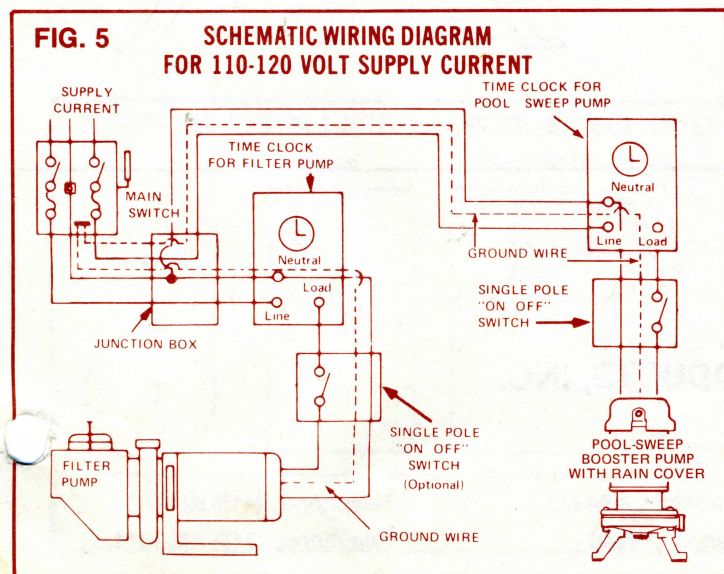
12 Failure to properly ground the motor frame for swimming pool installations as specified in Article 680 of the National Electrical Code may result in serious electrical shock. The motor frame should be grounded as follows:

1. Equipment grounding conductor should be connected to the No. 10 green-headed ground screw provided inside the motor terminal box.
2. Bonding conductor to bond all non-current carrying metal parts should be connected to the No. 10 screw provided on the opposite shaft extension end of motor housing.

INSTALLATION INSTRUCTION

13 This motor is a drip proof motor, designed to withstand water drops up to 15 degrees from the vertical. To prevent water damage, the motor should be installed so that water is prevented from entering the motor either by rainfall or through splash or flooding.

It is required that the MOTOR CANOPY supplied with this pump be installed on top of motor.



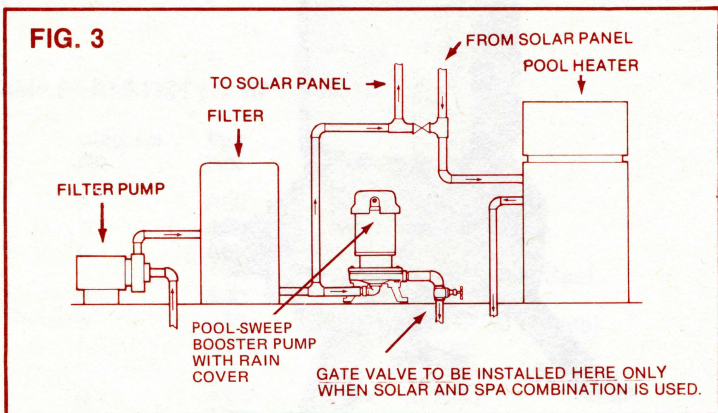
PDF Compressor Pro Arneson Pool-Sweep Booster Pump Installation

This is a specially designed booster pump. It is 1/2 horsepower with a 1.9 service factor producing a minimum of 50 psi at 12 GPM. Substitute pumps generally do not perform to these required standards.

1 LOCATION . . . Place pump on a firm and level surface. It need not be bolted down unless required by local code. Select most convenient location for a neat and serviceable installation—as close as possible to filtered water return line. *Note:* Pool-Sweep booster pump must always be connected to return line on discharge side of filter. *Never connect suction side of booster pump ahead of filter.* (See Fig. 1)

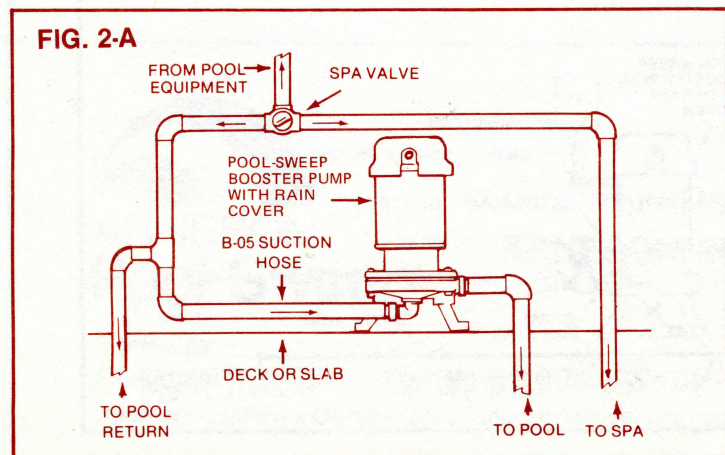
2 TYPICAL INSTALLATION POOL-SWEEP ONLY . . . Pool heater considerations . . . If a pool heater is used, suction side of Pool-Sweep booster pump must be connected into the return line *after* heater. *Never connect suction side of booster pump ahead of filter or heater except on solar installations.*

3 INSTALLATION WITH SOLAR HEATER . . . When installing a Pool-Sweep on a pool with solar heating (with or without a gas heater for back-up), the saddle clamp or inline tee must be installed on the return line between the filter and the solar heater. This assures an ample supply of water, and minimizes the possibilities of an air lock in the Pool-Sweep pump each time the solar panel is filled.



4 INSTALLATIONS WITH SPA POOLS . . . If your pool is plumbed for a spa pool, connect suction side of Pool-Sweep booster pump *after* spa by-pass valve as in 2A or alternate 2B.

5 PUMP INLET CONNECTION TO POOL RETURN LINE . . . On pre-plumbed installations use an elbow and reducing bushing if needed (See Fig. 1). On existing installations use a tee or saddle clamp. Pump suction must be connected to



the return line after filter and heater as follows:

- Preferable, whenever possible, underneath side (*never* on top) of horizontal return line, or
- As close as possible to floor on vertical return line.

6 EXISTING INSTALLATIONS ABOVE WATER LEVEL . . . (Pool filter equipment located above pool water level) A 3/4" threaded outlet is needed in return line to connect booster pump suction to filtration system. If a saddle connection is made **BE SURE RETURN LINE IS DRAINED FREE OF WATER BEFORE AND DURING DRILLING OPERATION** and proceed as follows:

- Fit saddle (K) of proper size over desired location in return line.
- Screw into saddle 3/4" male pipe x 3/4" male hose adapter (B03B) supplied in pump package.
- Drill hole into pipe or tubing through hose adapter and saddle opening. Use a 23/32" or 11/16" drill which will just clear and be guided by adapter fitting.
- Thread the male end of the (B17A) street ell into the pump suction tapping in the center of the volute. (Use pipe sealing compound suitable for use with plastic parts.) Install (B03B) adapter in female end of (B17A) street ell.
- Using rubber washers (D10) in each end, connect one end of 2' long rubber suction hose (B05) to filtered water return line and other end to (B03B) adapter in pump suction. (See Fig. 4)

7 EXISTING INSTALLATIONS BELOW WATER LEVEL . . . (Pool filter equipment located below pool water level) If a saddle connection is made **BE SURE RETURN LINE IS DRAINED FREE OF WATER BEFORE AND DURING DRILLING OPERATION** and proceed as follows: (See Fig. 4)

- Place saddle clamp of proper size over desired location in return line.
- Install a close 3/4" brass nipple (B18A), a brass gate valve (B02) and a hose adapter (B03B) on saddle clamp before drilling.
- Insert drill through hose adapter and open gate valve and drill hole into return line.
- To connect pump proceed as in 6 d. and e. above. **IMPORTANT!!!** Be sure to open gate valve before operating pump. Once opened, valve handle should be removed in order to minimize the risk of running pump without water, thereby damaging its seal and impeller.

CAUTION

Be sure all electrical power is OFF before making any electrical connections to existing power sources.

