

# IMPORTANT INFORMATION

---

## OWNER'S MANUAL

**Polaris 60**  
V A C • S W E E P

# Polaris60

V A C • S W E E P

## Important Information

The following are important points to remember when installing and operating the Polaris Vac-Sweep® 60.

- Always disconnect the Polaris from the pool wall when cleaning or backwashing the pool filter.
- After cleaning or backwashing, let the filtration system run for at least five minutes before reconnecting the Polaris.
- New plumbing lines should be flushed out before installing the Polaris.
- Always handle the Polaris with care. Do not let children play with it; it is not a toy.
- Never handle the Polaris when it is operating.
- Always remove the Polaris **before swimmers enter the pool.**
- Carefully cut the hoses following the instructions on page 1.

By following these simple guidelines, you can help protect against injury and prolong the life of your Polaris 60.

If you have any questions regarding these instructions, please call our Customer Service Department toll-free at 1-800-VAC-SWEEP, Monday through Friday, 7:30 a.m. - 5:00 p.m., PST.

Before installing the Polaris, please take a moment to record the serial number. For the location of the serial number, refer to the diagram in Section A on page 1. You will be asked for this number when you contact our Customer Service Department.

**Serial #** \_\_\_\_\_

# I. Introduction

Thank you for choosing a Polaris 60. You will find that it vacuums the bottom and sweeps the sides of any size or shape aboveground pool. The Polaris 60 does all the hard work for you, leaving you with a sparkling clean pool. It's simple to use and easy to install. Just follow these step-by-step instructions.

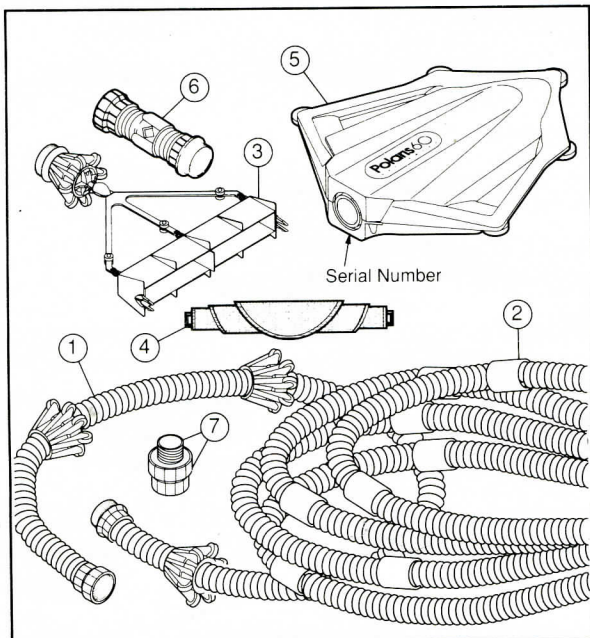
## II. Installation Instructions

### A. Polaris 60 Components

The Polaris 60 box contains:

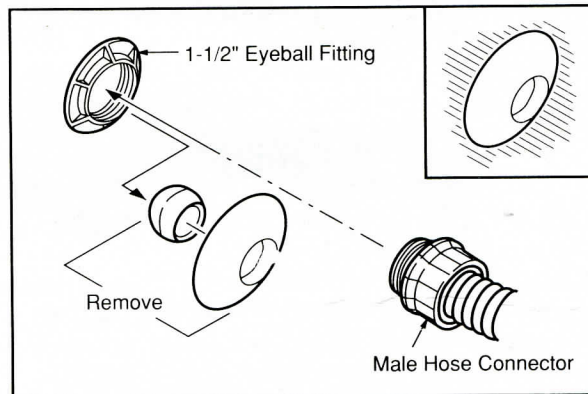
1. Sweep Hose, 7 Ft.
2. Float Hose, 24 Ft.
3. Jet Sweep Assembly
4. Filter Bag
5. Surface Module

One pressure reducer (6) is included to be used only if needed. See Section E on page 2. Two fitting adapters (7) are also included for those pools that have return lines other than what is shown in Section B. In this case, contact our Customer Service Department at 1-800-VAC-SWEEP for instructions.

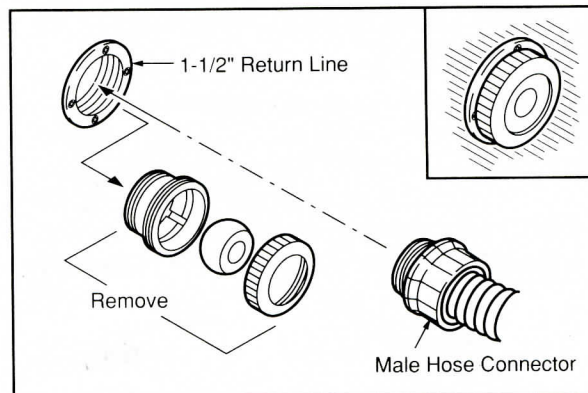


### B. Pool Connections

If your return line looks like the one below, remove the parts shown. Screw the male hose connector on the float hose into the 1 1/2" eyeball fitting.



If your return line looks like the one below, remove the parts shown. Screw the male hose connector on the float hose into the 1 1/2" female return line.



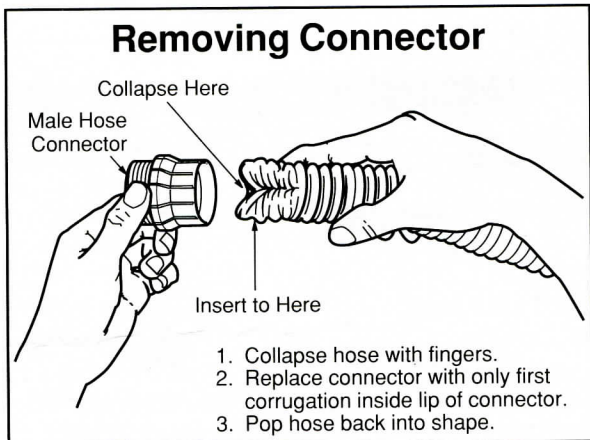
If your return line does not look like the ones above, contact our Customer Service Department at 1-800-VAC-SWEEP.

### C. Adjusting the Float Hose

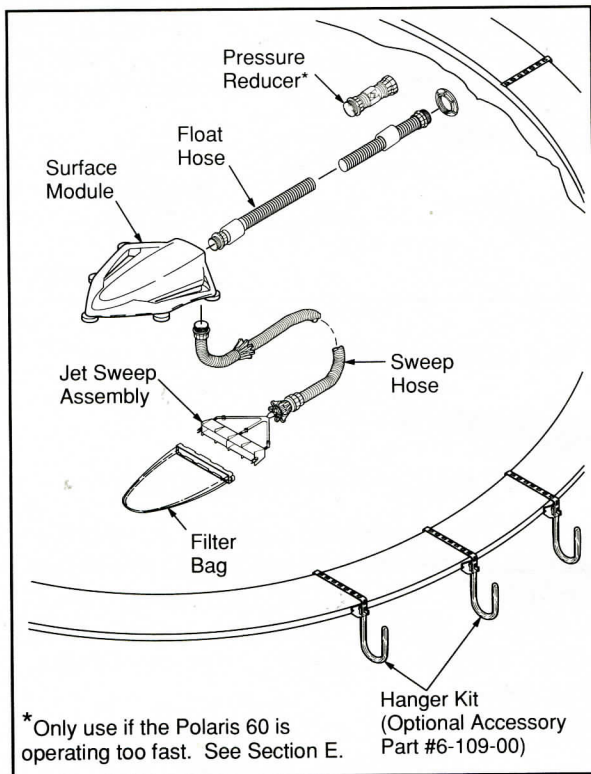
1. With the pool filtration pump off, connect the float hose to the pool wall and extend it to the farthest point in the pool. If the float hose does not come within four feet of the farthest point, you will need to add a Float Hose Extension Kit (part #6-111-00).



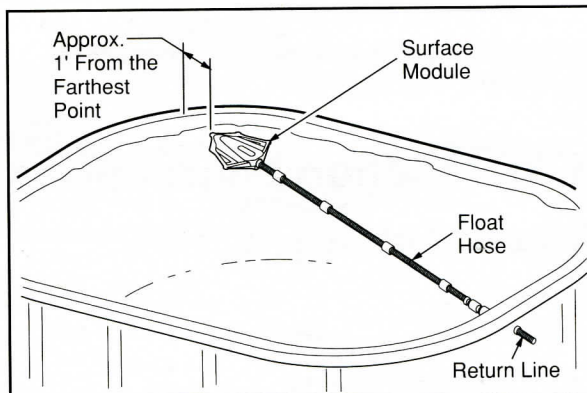
2. Cut the float hose so that it is four feet short of the pool wall.
3. Remove the hose connector from the hose you just cut off and put it on the new end of the hose.



4. Attach the sweep hose and the filter bag to the jet sweep assembly. When attaching the filter bag, make sure the frame of the bag is completely open.
5. Attach the float hose and the sweep hose to the surface module.



6. Turn on the pool pump and extend the hose back to the farthest point in the pool. The float hose is cut correctly if the surface module is approximately one foot from the pool wall when the pump is running.



## D. Operation

When operating correctly, the surface module of the Polaris 60 will float on the surface of the pool. As it moves randomly throughout the pool, it circulates clean, filtered water.

The filter bag will spend a majority of its time on the pool floor collecting dirt and debris. It will remove debris as large as leaves or as fine as sand. The Polaris 60 will vacuum and sweep the pool in three hours or less.

If the Polaris 60 is banging into the sides of the pool, you will need to install the pressure reducer (see below).

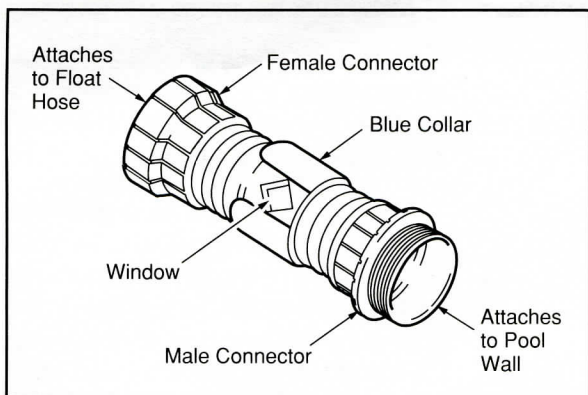
## E. The Pressure Reducer

**Note:** In most cases it will not be necessary to install the pressure reducer.

Do not install the pressure reducer unless your Polaris 60 is operating too fast. Excessively fast operation is indicated by the filter bag not spending the majority of its time on the pool floor or by the surface module banging into the pool walls.

If needed, install the pressure reducer between the pool wall and the float hose. See the diagram on the next page.

To adjust the pressure reducer, turn on the filtration pump. Turn the blue collar until the Polaris 60 slows sufficiently.



**Please Note:** As the pool filter becomes dirty, you will need to close the window to maintain adequate power to the cleaner.

### III. Maintenance

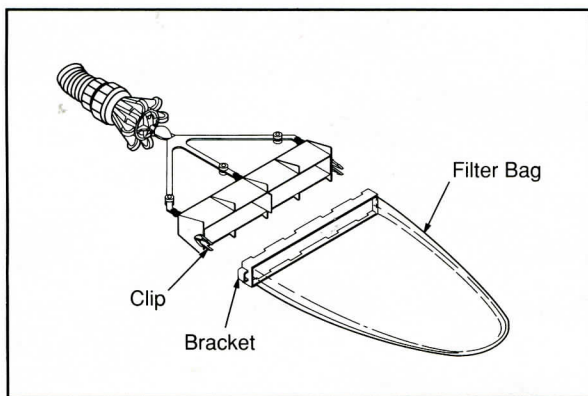
The most important step in maintaining the Polaris 60 is emptying the filter bag on a regular basis. A clean bag will improve the performance of the Polaris 60.

It is also important to clean the pool filter. A dirty pool filter can result in sluggish or inefficient operation of the Polaris 60.

Make sure the Polaris 60 is disconnected from the pool wall before cleaning and backwashing the pool filter.

#### A. Emptying the Filter Bag

1. Turn off the pool filtration pump.
2. Remove the filter bag by compressing the clips and sliding them out of the brackets.
3. Turn the bag inside out over a trash can.



### B. Storage and Winterizing

When storing the Polaris 60, remove the sweep hose and float hose from the surface module. Also remove the jet sweep assembly from the sweep hose.

We recommend that the jet sweep assembly lay flat and the hoses lay or hang straight. You may want to purchase the Hanger Kit (part #6-109-00) for more convenient hose storage. See Section C below and the diagram on page 2.

Drain the surface module carefully. It is very important to get all the water out of the module. Twist it in all directions to aid in the removal of the water. **THIS IS ESPECIALLY IMPORTANT WHEN YOU ARE PUTTING THE POLARIS 60 AWAY FOR THE WINTER.** We suggest that you store the surface module in a clean, dry environment out of direct sunlight.

### C. Accessories

Illustrated installation instructions are included with each of the following accessories.

#### 1. Leaf Bag (Part #6-205-00)

The Polaris 60 comes with a sand/silt bag especially designed with very fine mesh for collecting sand, silt and other fine debris. The leaf bag is made of a more durable material to collect larger, heavier types of debris, such as leaves and acorns. You may want to purchase the Polaris leaf bag and rotate between the two bags as needed.

#### 2. Hanger Kit (Part #6-109-00)

The hanger kit is an ideal method of storage for your Polaris 60 while it is not in use. It keeps the Polaris safe and out of the way. It also helps keep the hoses from coiling during prolonged storage.

#### 3. WaterStars NL (Part #7-400-00) and Water Stars WF (Part #11-100-00)

Now you can instantly beautify your pool with a Polaris WaterStars NL or WF fountain. Choose a gentle rainfall display or a cascading waterfall display and transform your pool into a lovely showcase for that special party. If you live in a hot climate, our WaterStars are a wonderful way to cool your pool and the surrounding area.



## IV. Troubleshooting

The numbers in parentheses refer to specific parts on the Exploded Parts Diagram on page 5. For best results, follow the troubleshooting solutions in the order they are listed.

**Problem:** Polaris doesn't clean the entire pool.

- Solution:**
1. Check that the pool filter is clean.
  2. If you installed the pressure reducer, close the window slightly to increase the water flow to the Polaris. The surface module should not bang into the sides of the pool. See Section E on page 2.
  3. Check the float hose (#7) length, see Section C on page 1.
  4. Check the surface module operation by following the steps below.
    - a. Remove the surface module top (#1) by unscrewing the two phillips head screws (#10) from the bottom of the module.
    - b. Turn on the Polaris. Make sure the randomizer tube (#3) is moving from front to back. If it is, refer to Step C below. If it is not, the filter connector (#3) may be clogged.

To check the filter connector, disconnect the float hose (#7) from the surface module and look into the mechanism (#2). About half way down in the center of the randomizer tube (#3), you can see the white filter connector (#3). If it is covered with debris or algae, pull the randomizer tube out with needle nose pliers and clean the filter. If it is not, the mechanism will need to be replaced.
    - c. While the Polaris is running, watch the ball in the mechanism (#2). If it does not move within two minutes and the randomizer tube (#3) is moving back and forth, the mechanism will need to be replaced.

**Problem:** Surface module dives under the water or leans to one side.

- Solution:**
1. Make sure the hoses are not twisted.
  2. Hold the surface module out of the water and drain it. Shake the surface module. If you hear water sloshing in the body bottom assembly (#8), drain it.

To drain the body bottom, disconnect the float hose (#7) and the sweep hose (#11). Remove the two phillips head screws (#10) at the back of the underside of the surface module, and remove the top (#1) and the mechanism (#2). Remove the drain plug and O-ring (#4) at the front of the body bottom and drain it. Replace the drain plug and O-ring, mechanism, top, two screws, and hoses. If the problem reoccurs, call 1-800-VAC-SWEEP.

3. Install the pressure reducer. See Section E on page 2.

**Problem:** The hose remains coiled.

- Solution:**
1. See "Polaris doesn't clean the entire pool".
  2. Lay the hoses out straight in the sun for 3-4 hours to remove the coils.

**Problem:** Surface module moves too fast.

- Solution:**
1. Install the pressure reducer, see Section E on page 2.
  2. If a pressure reducer has already been installed, slowly open the window until the Polaris slows down. See Section E on page 2.

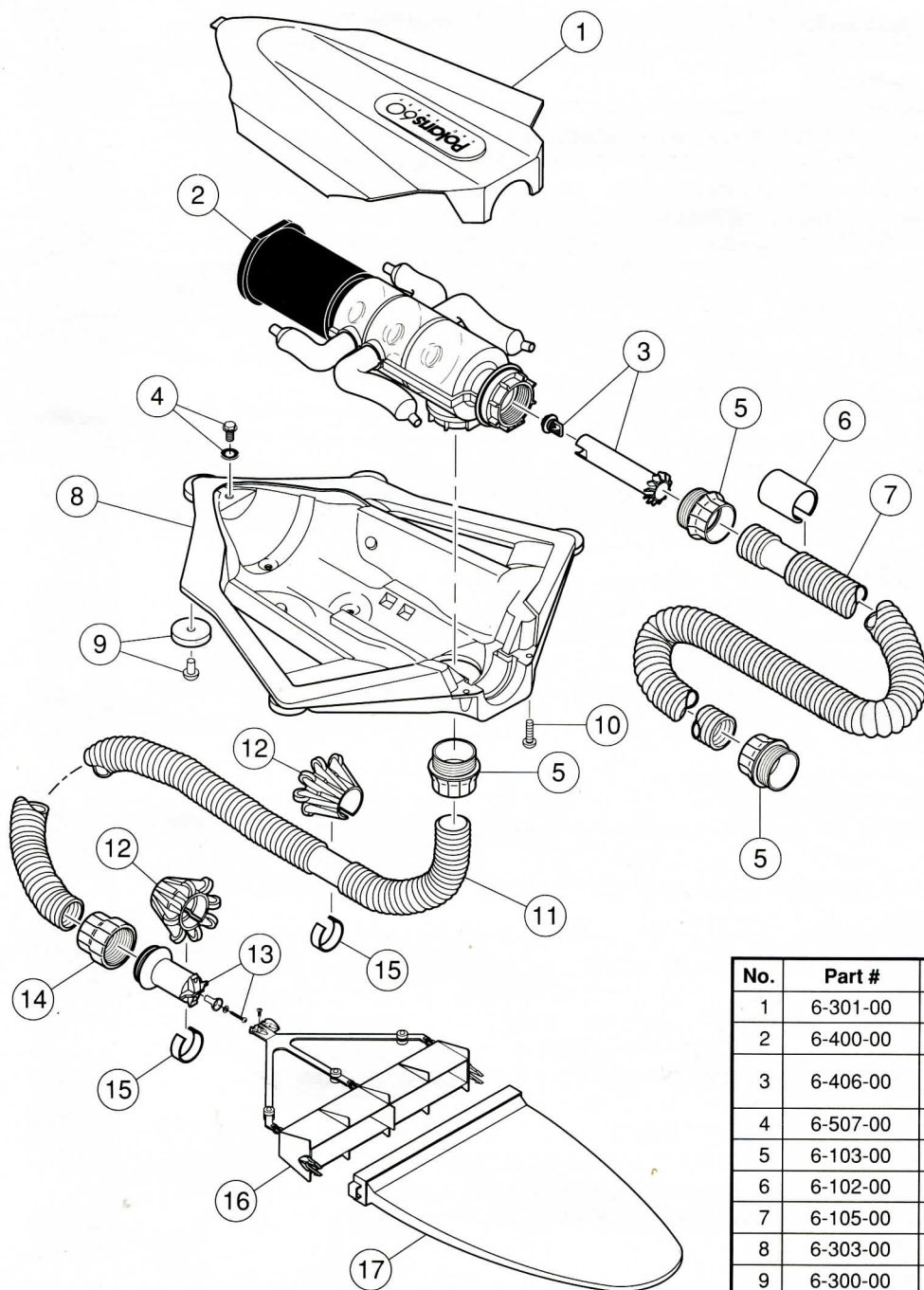
**Problem:** Bag does not stay on pool floor.

- Solution:**
1. The water flow may be too high. See "Surface module moves too fast" above.
  2. If there are air bubbles coming from the connection between the bag and the sweep hose, you may have air entering your plumbing line. Contact your participating Polaris dealer.

**Problem:** Polaris runs too slowly.

- Solution:** See "Polaris doesn't clean the entire pool".

# Exploded Parts Diagram

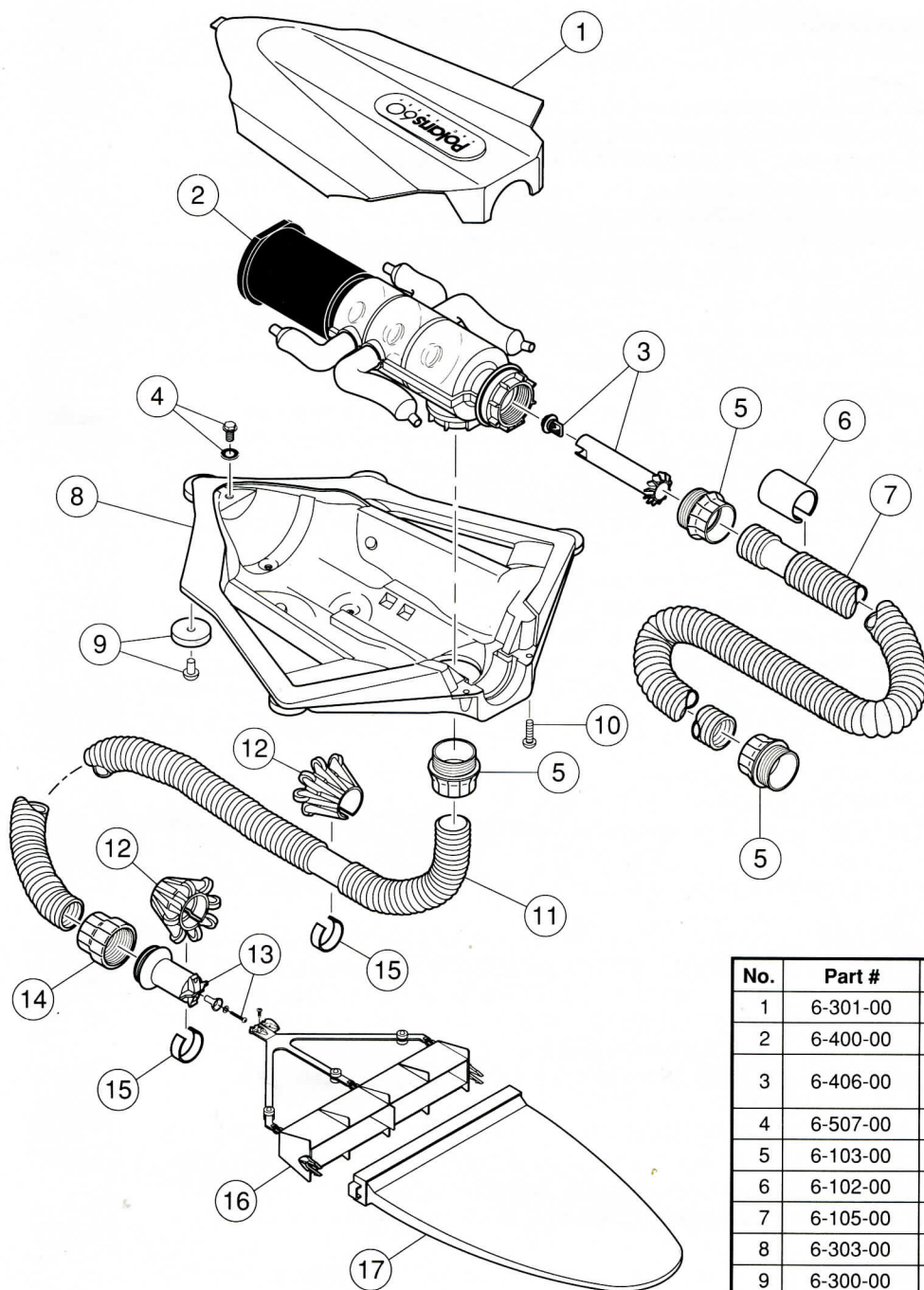


To insure proper operation and long life for the Polaris, be sure to insist on genuine Polaris parts.

No.	Part #	Description	Qty.
1	6-301-00	Surface Module Top	1
2	6-400-00	Mechanism	1
3	6-406-00	Filter Connector/Randomizer Tube Kit	1
4	6-507-00	Drain Plug Assembly	1
5	6-103-00	Hose Connector, Male	3
6	6-102-00	Float	24
7	6-105-00	Float Hose Complete	1
8	6-303-00	Body Bottom Assembly	1
9	6-300-00	Body Bottom Wheel Kit	5
10	6-302-00	Screw, Phillips-Pan, #10 x 3/4"	2
11	6-106-00	Sweep Hose Complete	1
12	6-107-00	Wheel Cage Assembly	7
13	6-108-00	Jet Body	1
14	6-104-00	Hose Connector, Female	1
15	6-110-00	Hose Weight	7
16	6-203-00	Jet Sweep Assembly, Snap	1
17	6-204-00	Filter Bag Assembly, Snap	1



# Exploded Parts Diagram



To insure proper operation and long life for the Polaris, be sure to insist on genuine Polaris parts.

No.	Part #	Description	Qty.
1	6-301-00	Surface Module Top	1
2	6-400-00	Mechanism	1
3	6-406-00	Filter Connector/Randomizer Tube Kit	1
4	6-507-00	Drain Plug Assembly	1
5	6-103-00	Hose Connector, Male	3
6	6-102-00	Float	24
7	6-105-00	Float Hose Complete	1
8	6-303-00	Body Bottom Assembly	1
9	6-300-00	Body Bottom Wheel Kit	5
10	6-302-00	Screw, Phillips-Pan, #10 x 3/4"	2
11	6-106-00	Sweep Hose Complete	1
12	6-107-00	Wheel Cage Assembly	7
13	6-108-00	Jet Body	1
14	6-104-00	Hose Connector, Female	1
15	6-110-00	Hose Weight	7
16	6-203-00	Jet Sweep Assembly, Snap	1
17	6-204-00	Filter Bag Assembly, Snap	1



## **Limited Warranty**

### **Polaris Vac-Sweep 60 Automatic Swimming Pool Cleaner**

This limited warranty is extended to the original consumer purchaser of this Polaris Vac-Sweep 60 Automatic Swimming Pool Cleaner manufactured by Polaris Pool Systems, Inc., P.O. Box 1149, San Marcos, California 92079-1149.

Polaris Pool Systems warrants the cleaning unit it manufactures, including all parts and components thereof, to be free of defects in material and workmanship. The Polaris 60 is intended for use in aboveground vinyl-liner pools only. This warranty does not apply if the Polaris 60 is used in any other type of pool. The warranty does not cover normal replacement items, including the filter bag. It does not cover improper installation of the Polaris 60, but the instruction manual is complete enough to solve any problems — particularly if it is read before, rather than after the installation. If you have any questions regarding the Polaris 60, please feel free to write us. Be sure to include the serial number of your unit.

The warranty commences on the date of installation of the unit and shall remain in effect for a period of twelve months, but in no event shall it be in effect for more than twenty-four months from the date of manufacture of the unit as established by the serial number.

This limited warranty does not apply if the failure is caused or contributed to by any of the following: improper handling, improper storage, abuse, improper installation, unsuitable application of the unit, lack of reasonable and necessary maintenance, winter freezing, or repairs made or attempted by other than Polaris or one of its authorized service centers. Polaris will repair or replace, at its option, a unit or part proved to be defective within the warranty period and under the conditions of the warranty.

The consumer must deliver or ship the unit or warranty parts freight prepaid, to the nearest Polaris Authorized Service Center, or return it freight prepaid (after proper authorization) to the plant of manufacture. Authorization to return a unit or part to the plant of manufacture must be obtained from the Polaris Customer Service Department. Check with your dealer for the local procedure before exercising this warranty. If further directions or instructions should be required, contact the Customer Service Department at 1-800-VAC-SWEEP. Be sure you insure your shipments against loss or damage in transit.

Polaris is not responsible for the cost of removal of the unit or parts, damages due to removal, any other expenses incurred in shipping the unit or parts to or from the factory or its authorized service centers, or the installation of the repaired or replacement unit. The consumer must bear these expenses.

The warranty does not cover repair or replacement of a unit or part except at our factory or a Polaris Authorized Service Center.

THIS LIMITED WARRANTY IS IN LIEU OF ALL OTHER WARRANTIES, EXPRESS OR IMPLIED, INCLUDING THE IMPLIED WARRANTIES OF MERCHANTABILITY AND FITNESS FOR A PARTICULAR PURPOSE, AND ALL SUCH OTHER WARRANTIES ARE DISCLAIMED EXCEPT TO THE EXTENT ANY IMPLIED WARRANTY MAY BE IMPOSED BY STATE CONSUMER LAW. ANY SUCH IMPLIED WARRANTY IMPOSED BY STATE CONSUMER LAW IS LIMITED IN DURATION TO ONE (1) YEAR FROM THE DATE OF PURCHASE.

IN NO EVENT SHALL POLARIS POOL SYSTEMS BE LIABLE FOR INCIDENTAL OR CONSEQUENTIAL DAMAGES OF ANY NATURE OR KIND, OR FOR DAMAGES TO PERSONS OR PROPERTY, INCLUDING ANY DAMAGE RESULTING FROM THE USE OF THE POLARIS 60 AUTOMATIC SWIMMING POOL CLEANER WITH A SUBSTANDARD POOL CIRCULATION SYSTEM.

Some states do not allow limitations on how long an implied warranty lasts, or the exclusion or limitation of incidental or consequential damages, so the above limitations may not apply to you.

This limited warranty is valid only in the United States of America and Canada, and it does not apply to Polaris 60 Automatic Swimming Pool Cleaners sold or installed in any other country.